

Uchigura
内蔵

Storehouse



Uchigura 内蔵

Storehouse

The 'Uchigura' is a store house for official documents as well as works of arts including paintings and calligraphy. It was built in the beginning of the 19th century. Its dimensions are 10meters long by 4meters wide. The pillars of the building are covered by a ceiling, 'Ookabeshiyou'. It is built with a gabled roof, called 'Kiridumadukuri' which is protected by alternating flat and round tiles, 'Honkawarabuki'. The floor space is about 39 square meters.

Shingura
新蔵

Newly-built Storehouse
for Household Objects



Shingura 新蔵

Newly-built Storehouse for Household Objects

There are three different storehouses in the Miki Residence. The newest one is the 'Shingura'.

The 'Shingura' is a storehouse for household items such as winter and summer clothing. It was built in the middle of 19th century.

The dimensions are 5meters long by 4meters wide. The floor space is about 19square meters.

Chouchinbako
提灯箱

Lantern Box



Chouchinbako

提灯箱

Lantern Box



Lantern

These are lantern boxes.

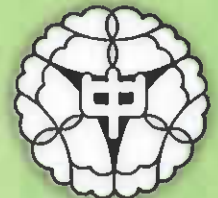
We call them 'Chouchinbako' in Japanese.

The lantern in the center box has been named 'Mitsuchou'. It means three butterflies.

This mark is also the emblem of the Hayashida Elementary and Junior



Hayashida
Elementary School



Hayashida
Junior High School

High School. This is the Miki family house crest.



Kudo
クド Kilns



Ido
井戸 Well



Kudo
クド

Kilns

These big kilns are 'Kudo', located in the kitchen. They were used by the Miki Family workers for making meals. In order from left to right, for boiling water, making rice and making soup.

Ido
井戸

Well

People haul water out of this well. This well is very deep. The cold water of this well was very tasty. But now you cannot drink it.

Komegura
米蔵

Storehouse for Rice



Komegura

米蔵

Storehouse for Rice

This storehouse or Komegura is for storing rice. It was built in the 19th century.

You store the rice by age in these three rooms from newest to oldest. It is cold and dark so the rice will not go bad. Please look at how thick the doors are and heavy to help store the rice.

The dimensions are 15 meters long by 5 meters wide. The floor space is about 73 square meters.

Umaya
厩

Stable



Umaya

厩

Stable

This space is the 'Umaya', or stables. The Miki family's people used the space for their horses and cows.

The name of the ceiling is 'Yamato Ceiling'. It consists of three parts. In order from the bottom, bamboo, straw, and soil. The ceiling makes this space cool in summer and warm in winter.

The horses and cows that lived here were not for riding. They were for working on the farm.

Himeji City Hayashida Junior High School

History volunteer guides



We, the students of Hayashida Junior High, volunteer as guides for the Miki residence once a month. We love Hayashida and are very proud of it. We are happy that guests have enjoyed our tours. We'll do our best to guide the people who visit here.

We issue a newspaper once a month. It tells of our activities at the Miki residence.

We are looking forward to seeing you soon. Please come and visit us!

- ◆Akari Nakayama
- ◆Ayaka Mosue
- ◆Maho Narisada
- ◆Suzuka Hattori
- ◆Taito Omichi
- ◆Yosuke Miki
- ◆Sora Otani
- ◆Ryohei Tsuji
- ◆Ayumi Takahashi
- ◆Himeno Tomoto
- ◆Hina Fujii
- ◆Urara Yamada
- ◆Mirei Yamamoto
- ◆Riko Nakamura
- ◆Yuki Fukushima
- ◆Yui Kozui
- ◆Hiroka Miki
- ◆Rino Tomoto
- ◆Miwako Osaki
- ◆Marin Nagayama
- ◆Chiho Furukawa
- ◆Ryoken Kudo
- ◆Satona Kudo

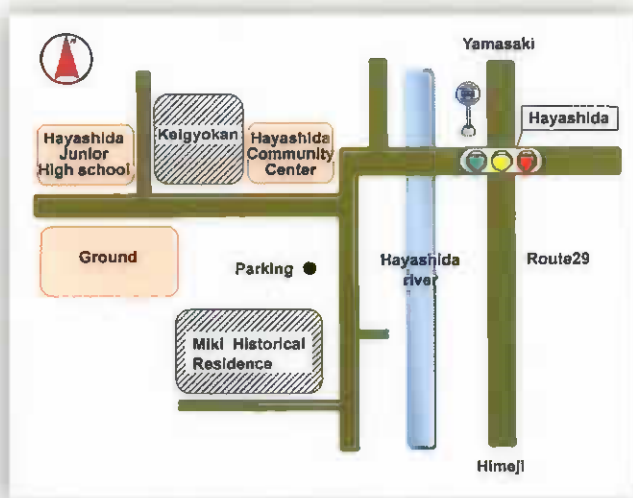
<p>大由屋 旧三木家徳兵衛 新新聞</p> <p>発行日 平成27年 12月22日</p>		<p>今回の活動？今年最後のイベント！</p> <p>今回の活動は、歴史の学び、文化の体験、そして、地域の魅力を伝えるための活動です。</p>	
<p>感想</p> <p>今回の活動は、とても楽しかったです。歴史の学び、文化の体験、そして、地域の魅力を伝えるための活動です。</p>		<p>感想</p> <p>今回の活動は、とても楽しかったです。歴史の学び、文化の体験、そして、地域の魅力を伝えるための活動です。</p>	
<p>次回の活動日 平成28年 1月23日(土)</p>		<p>感想</p> <p>今回の活動は、とても楽しかったです。歴史の学び、文化の体験、そして、地域の魅力を伝えるための活動です。</p>	

General Information

❖Access❖

The Miki residence is located on Route29 from the Himeji Bypass at the Himeji-Nishi Inter Change or from the Sanyo Expressway at the Himeji-Nishi IC. It is also a 30min drive on Route29 from the Chugoku Yamasaki Inter Change.

Otherwise please take the Shinki Bus No.31 “Hayashida keiyu Yamasaki yuki” or No.32 “Kamiise keiyu Yamasaki yuki” from Himeji Station, and get off at the “Hayashida bus stop” then walk west for about 10minutes.



❖Closed❖

Tuesday, Wednesday, Thursday, 12/28 ~ 1/4

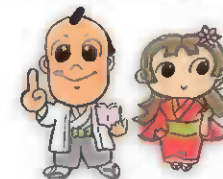
❖Hours of admission❖

10:00 ~ 16:00 (Must enter by 15:30)

❖Admission fees❖

	Adults	University and High school students	Elementary and Junior high school students
General Admission	¥300	¥200	¥100
Group (20more)	¥240	¥160	¥80

Hayashida Oojyoya Miki Historical Residence
 〒679-4203 74 Nakagamae Hayashida Himeji Hyogo
 Tel・Fax 079-261-2338
<http://npo-shinpoohayashida.net>
mikike@npo-shinpoohayashida.net



Published: 林田町観光ボランティアガイド活動応援事業 (NPO 法人 新風林田)
 Edited: 姫路市立林田中学校歴史ボランティアガイドジュニア NPO 法人 新風林田
 Cooperation: 姫路市教育委員会 林田町観光ボランティアガイドの会 林田・伊勢地区連合自治会
 中綴磨地域づくり活動応援事業